

COPYBOARDS

Series

board with advanced memory function.
productive meetings.

Choice

Copyboards let you output your ideas and drawings using either a printer or USB Flash Memory. as with the simple touch of a button.

Digital Data

Save image data...

You can save the image data to your USB Flash Memory without hooking up to a PC.

Easy distribution...

Easily distribute exact copies of your work via e-mail to attendees and people at distant location who were not present at the meeting.

Utilize the data...

Further edit and enhance your work with image editing programs. Paste your notes, drawings, charts, and diagrams into office documents.



Recommended Configurations

Stand-mount with printer
(*Inkjet printer and stand are optional)
Mounts on a stand with casters for easy mobility. You can change the height of the copyboard unit at three positions.



Standard panel type **M-11S**



Wide panel type with a large writing space **M-11W**

Other Configurations

Customized configurations are available for additional flexibility, such as the mobile T-shape stand or the wall-mount type. Choose the configuration that best fits your conference room and budget.

Choice of standard and wide writing panel size is available for all configurations.

Some models require construction work for installation. Please consult your dealer for details.



Wall-mount with printer



Wall-mount without printer



Stand-mount without printer

SPECIFICATION

	M-11S	M-11W	
BOARD	Board Surface Size	W1300 x H920 mm (51.2 x 36.2 inches)	W1800 x H920 mm (70.9 x 36.2 inches)
	Effective Reading Area	W1280 x H900 mm (50.4 x 35.4 inches)	W1780 x H900 mm (70.1 x 35.4 inches)
	Number of Pages	2	
	Sheet driving method	One Direction Endless Drive(Motorized / Manual)	
	Grid	50mm (2 inches) Squares	
	Writing Instruments	Dry Erase Whiteboard Markers (Black/Red/Blue/Green)	
	Reading Method	CCD Optical Sensor (RGB LED)	
	USB Port	3Port	
PRINTER	Lower Part of Board: A-Type 1Port (for Printer), B-Type 1Port(for PC) Control Panel: A-Type 1port (for USB Flash Memory)		
	Print Method	Inkjet(HP PCL3e Compatible) ^{*1}	
	Paper	SAMSUNG Laser(SPL: Samsung Printer Language Compatible) ^{*1}	
	Colors	A4-size(210 x 297mm)/ Letter-size(8.5 x 11inches) Plain Paper	
OUTER MEMORY	Print Density	Color or Black	
	Interface	300dpi	
	Type	USB 1.1 or USB 2.0 full-speed mode ^{*2}	
PC CONNECTIVITY	File Format	USB Flash Memory ^{*3}	
	Support OS	PNG and PNG Related HTML ^{*4}	
	File Format	USB 1.1 or USB 2.0 full-speed mode ^{*2}	
ENVIRONMENTAL CONDITIONS	Support OS	PNG/BMP/JPEG/TIFF ^{*5}	
	Temperature	Microsoft Windows 2000 Professional(Service Pack 4 or Later)/XP/Home Edition /Professional Edition Service Pack 2 or Later)	
	Humidity	10°C - 35°C(Operating)	
POWER	Source	30 - 85%(No condensation)	
	Consumption	AC100V-240V, 50-60Hz ^{*6}	
SIZE	Outer Dimensions (with Stands) ^{*7}	7W or less (Standby),7W (Power-on),40W (Operation)	
	Weight(without Printer)	W1470 x D700 x H1970(max) mm (W57.9 x D27.6 x H77.6(max) inches)	W1970 x D700 x H1970(max) mm (W77.6 x D27.6 x H77.6(max) inches)
	Installation	39kg / 86.0lb	43kg / 94.8lb
CONSUMABLES	Stand / Wall-Mount		
	Markers(Black, Red, Blue, Green), Eraser, AC Adaptor, USB Cable (3m length), Wall Mounting Brackets and Screws, User's Manual, Set-up Manual, Paper(5 Sheets for Test Printing), CD-ROM(TWAIN Driver, PLUS Image Viewer Ver.2, Set-up Utility, User's Manual(PDF))		

^{*1}: A printer is not included. Printer must be purchased separately. ^{*2}: Not correspond High-speed. ^{*3}: A USB Flash Memory is not included. ^{*4}: The PNG format is supported by Microsoft Internet Explorer 6.0 later, or WEB Browser is supported PNG format. ^{*5}: Image format(BMP/JPEG/TIFF/PNG) is supported by PLUS Image Viewer Application. ^{*6}: The condition is subject to change depending on sales area. ^{*7}: The height is adjustable at 1770, 1870, and 1970 mm (69.7, 73.6, and 77.6 inches).



PLUS Vision Corp. has ISO 9001 certification. Certificate No.1210017398 TMS



PLUS Vision Corp. has ISO 14001 certification. Certificate No. NQE-0210118A

The PLUS Group PLUS Vision Corp.

Inagi Office
1033-1, Oshitate, Inagi-shi, Tokyo 206-0811 JAPAN
TEL:+81-(0)42-370-8216 FAX:+81-(0)42-370-8226
e-mail: plusvision@plus.co.jp
www.plus-vision.com

©2006, PLUS Vision Corp.
[F-061] 0606IS-10A
Printed in Japan

Specifications are subject to change without notice

PLUS M-11 Series

The World fastest Electronic Copyboard v
The M-11 for more produ c

Your Choice

These advanced copyboards let you output your ideas and drawings using either a printer or a USB Flash Memory. as with the simple touch of a button. Share your ideas with the s

Print Out

Quick print...

Present your audience with an exact copy of what has been written.

Clear and beautiful...

Better comprehension when no one must transcribe the meeting. Avoid mistakes and miscommunication.

Inkjet printer or Laser printer...

Wide choice of the printer to suit your needs. Store you printed notes conveniently on plain paper and quickly include them with meeting reports.

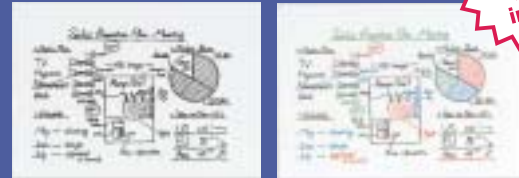
Want print?

Push! Print button.
Color print for Better Comprehension.

FASTEST. QUICK START & QUICK PRINT.

Speed is one of the most important factors in business, as it is in the case of business meetings. Using a M-11, you can distribute copies of the meeting minutes immediately after the meeting. Using USB memory function of the M-11, you can send the same information to everyone outside the meeting room at once. The M-11 is the fastest copyboard in the world and the advanced copyboard technology makes these operations much faster.

Color gives your copies more impact!



Wide choice.

Supports both laser and inkjet printers.

Laser printers are popular in the business world because of their higher print quality, fast print speed and low cost per run. The M-11 is first copyboard to support laser printers in addition to inkjet printers. You can choose 4 different types of print out.

- Color prints using an inkjet printer for regular copies
- Black & white prints using an inkjet printer for quick copies.
- Color prints using a laser printer for comprehensible multiple copies.
- Black & white prints using a laser printer for fast multiple copies.



User-friendly.

Time/Day Stamp and other utilities.

You can customize the M-11 functions by using the bundled PLUS Setup Utility software.

- Time/Day Stamp: print the date/time of your copy on your print.
- Aspect Ratio: You can change the aspect ratio of the copy image (effective only for the M-11W)

2006/7/3 13:12 Time/Day Stamp

ABC

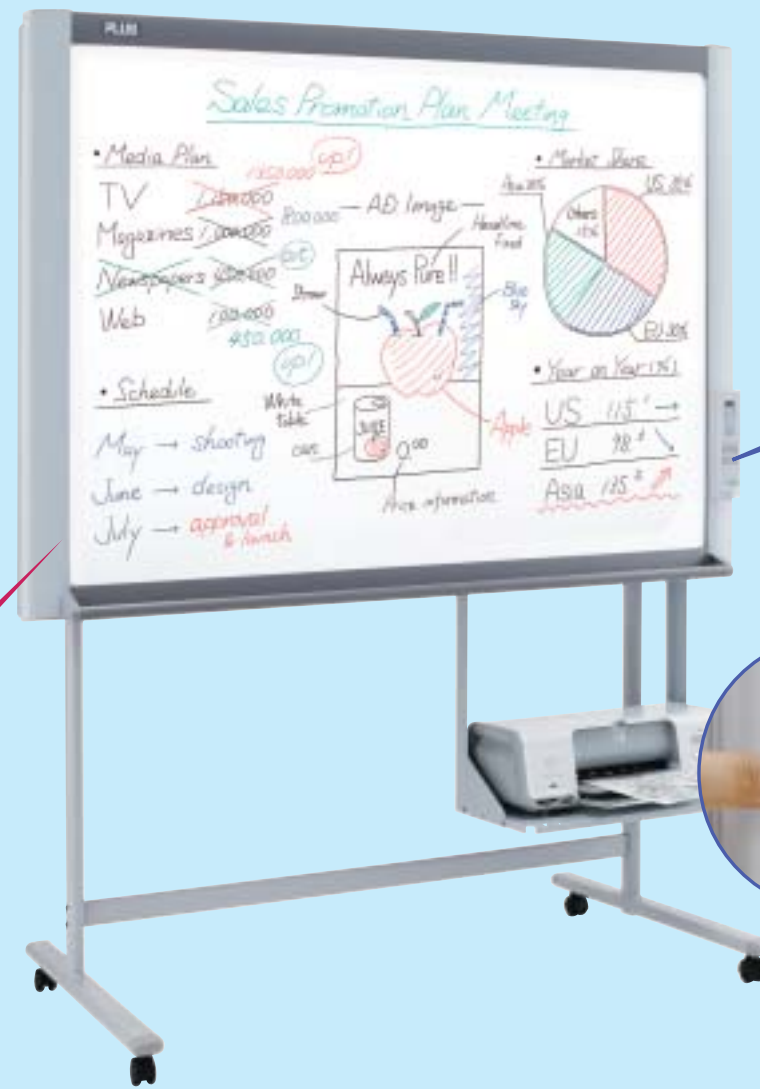
A NEW LED LIGHT SYSTEM
 Low power consumption and no lamp replacement necessary.

THE NEW STANDARD COPYBOARD FROM PLUS

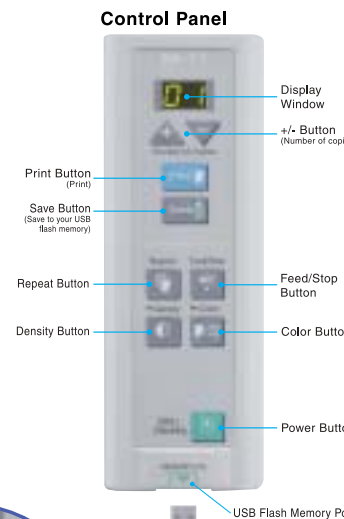
PLUS electronic copyboards surpass the functionality of the common whiteboard while being just as simple to use. Electronic copyboards provide an ingenious push-button solution to converting the information on the board to either printed material or electronic data which can then be easily stored and shared. There is no longer any need to rewrite the work you have already done and your audience can concentrate on the discussion when freed from taking notes. You save time and avoid errors when everyone has exact copies of the original information. This was never possible with a whiteboard!

- PLUS has set the standard for copyboards and continues to raise the bar.
- 1998 - The model BF-040CP. The first color copyboard
 - 2003 - The model M-10. The first copyboard with MEMORY function
 - 2004 - The model M-5. The first personal copyboard with Dual MEMORY function

The M-11 takes another leap forward in copyboard technology. Increased speed, a variety of print solutions, and digital storage options make the M-11 the new standard in the copyboard market.



Simple Operation



Want a digital file?

Push! Save button.
Image data for e-mail and Archiving.

USB flash memory for stand-alone application.

No need for a personal computer.

Simply insert a USB flash memory into the M-11 and press the Save button on the control panel to save information and ideas written on the board to the flash memory. Like a digital camera, you can save images anytime you like without a personal computer. Stored as compact PNG image files, your data can be easily distributed when attached to emails and opened by recipients without the use of special software.



USB cable to PC connection for increased functionality.

Download image data and control the M-11 setup.

You can download an image from the M-11 directly to your personal computer via a USB cable. Using the PLUS Image Viewer software, you can choose among JPG, BMP and TIF file formats in addition to PNG file format. You can control the M-11 from your computer and change the M-11 setup using the bundled software when connected to the board through a USB cable to pc connection.



Customize your M-11 to best suit your needs.

The Following function can be adjusted using M-11 Setup Utility.

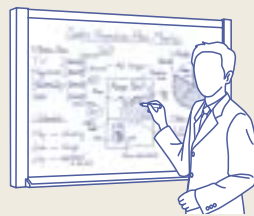
- Time/Day stamp
- Binding Margin
- Paper Size
- Aspect Ratio (valid for the M-11W)



How Electronic Copyboards Work

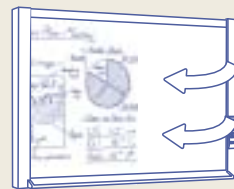
1 Write directly on the surface...

Use the electronic copyboard just as you would use a white board. Write directly on the surface, draw diagrams, take notes, brain storm. When the surface is full, you have options of printing or electronically storing your work, or continuing your writing to the next surface without losing your current work or your train of thought!



2 Scroll the sheet...

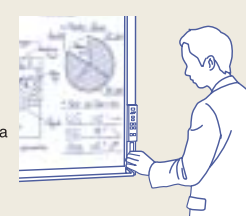
Simply push the Feed/Stop Button to scroll the sheet one position left. A press of this button while scrolling will stop the scrolling. The sheet can also be moved manually, even when the power is off.



Save Your Writing and Images. To USB flash memory. For Easy Storage and Distribution.

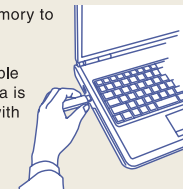
3 Save image data...

With a USB flash memory inserted, simply press the Save button on the board's control panel to download whatever is written to the flash memory. Press the button each time you finish a board page, and everything is stored as image data.



4 Easy distribution...

Insert the USB flash memory to a personal computer to download the data. It is recognized as a removable drive, and the image data is stored in "M-11" folder with the file name of PV-xxxxxx.png. ("xxxxxx" consists of the data and number.) Works just like a digital camera.



5 Utilize the data...

When the writing on the copyboard is downloaded to your computer it is easily viewed with common image viewing / editing applications and utilized in any number of ways. You can edit the image, insert it into office documents, or attach it to e-mails.

